



Face-to-face instruction: GPPSS will offer full time, face-to-face instruction for all grade levels beginning the first day of school. There will not be any separate cohorts or OneGP Virtual.



Masking in school buildings: Per emergency order of the WCHD, facemasks are required for all students, staff and visitors in all school buildings for grades pre-k through 12, regardless of vaccination status. GPPSS will comply with all WCHD mandates.



Physical Distancing & Lunch Procedures: To the greatest extent possible, all classrooms and lunchrooms will be set up to provide 3 feet of distance between students. Outdoor lunch will be encouraged when weather permits. Classrooms will remove all non-essential furniture. Group time will be limited to less than 15 minutes.



Desk & Face Shields: GPPSS will not require desk shields to be used inside district buildings during class or lunchtime. Desk shields and face shields will be available upon request.



Lockers: GPPSS students will have access to lockers throughout the school day. Information on locker assignments will be provided at registration.



Visitors & Volunteers: Visitors and volunteers will be permitted inside school buildings. All visitors must enter through the office and follow building protocols for check-in. Masks are required for all visitors.



Cleaning, Hygiene & Ventilation: GPPSS will continue to follow strict and thorough cleaning procedures in all district buildings. Regular hand washing is encouraged and hand sanitizer will be easily accessible to students and staff. Our ventilation systems have been updated and will continue to be maintained and run for optimal air quality. GPPSS will require individual air purifiers in classrooms with groups of students regularly assigned and filters will be changed as needed.



Daily Health Screening: GPPSS strongly recommends each student is screened at home before coming to school. Any student who displays symptoms will be sent home immediately. We ask all families to please keep your student home if they show any signs of illness.



Busing: Masks on buses are required by the CDC and will be provided if needed.



Contact Tracing/Reporting/Quarantines: Schools are required to report communicable diseases to their local health department within 24 hours. Positive or probable COVID-19 cases will be reported to the WCHD. When there is a positive or probable case within a classroom, an exposure letter will be sent home to parent(s) or guardian(s). GPPSS is exploring opportunities to provide **voluntary** testing for unvaccinated individuals. **For quarantine protocols, see page 2.**

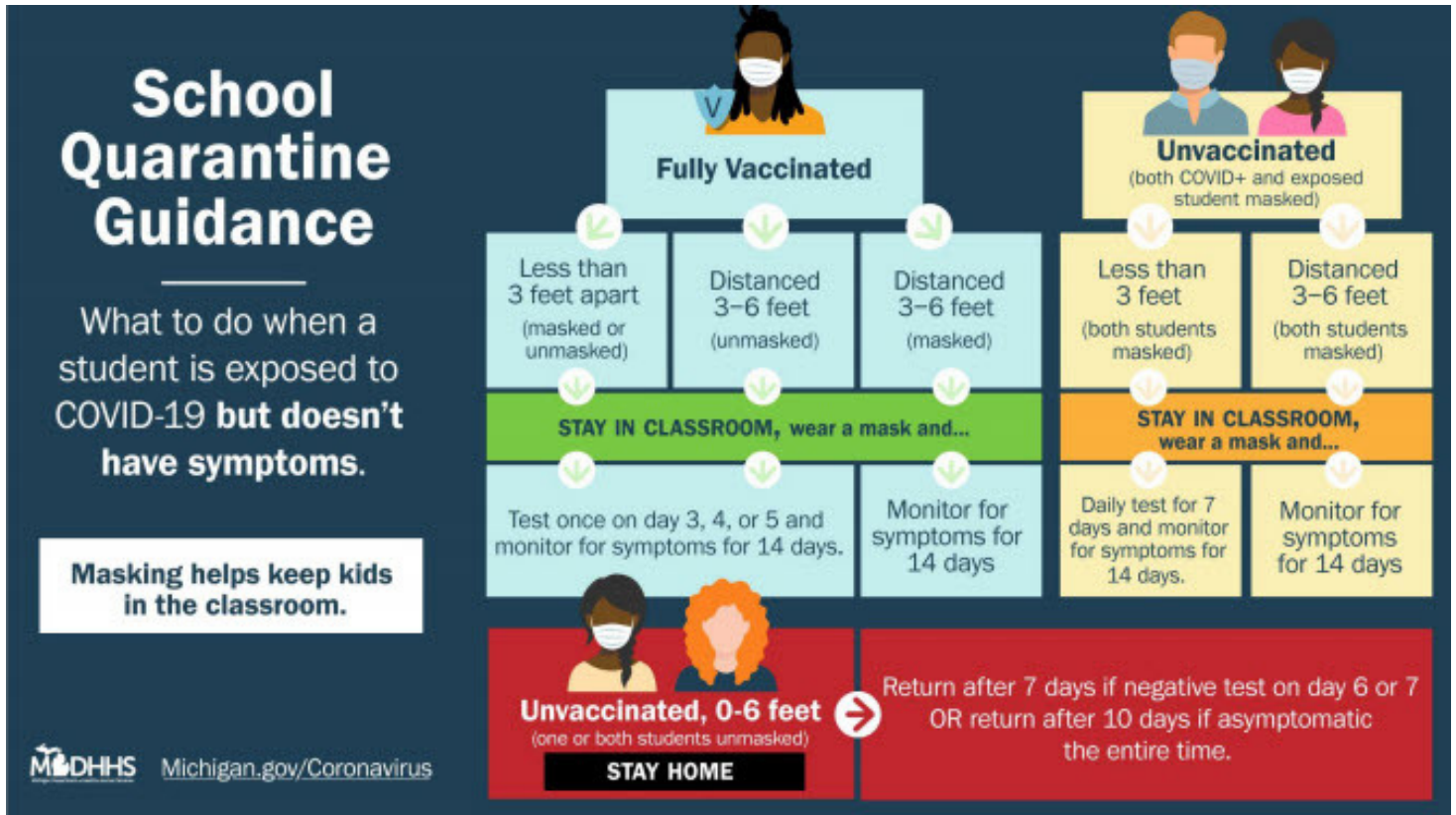


COVID-19 Testing: GPPSS has never required COVID-19 testing for our students and will not require it at this time. In addition, MHSAA has lifted all requirements for student-athlete testing as of June 22, 2021.



COVID-19 Vaccination: GPPSS strongly recommends all eligible students and staff receive the COVID-19 vaccine. At this time, MDHHS does not require the COVID-19 vaccine. WCHD has offered to provide boosters to staff when available. GPPSS is exploring serving as a site for **voluntary** vaccination clinics with healthcare partners.

Quarantine Protocols



If a student or staff member does not meet the above criteria and is identified as a close contact to a person with a confirmed case of COVID-19, the close contact will be required to self-quarantine for 10 days.

For more information, please see the [Wayne County Return to School Roadmap](#).



All information is current as of Sept. 27, 2021. All protocols are subject to change based on local COVID-19 infection rates and any federal/state/county mandates.

These protocols include masking, social distancing in classrooms, lunch structure, daily screening, quarantining and other possible mitigation measures that may be necessary to address increased community COVID-19 infection rates.

REQUIREMENTS & RESPONSE

MITIGATION STRATEGY	REQUIREMENT	AGENCY	GPPSS RESPONSE
Face-to-face Instruction			Face-to-face instruction at all grade levels.
Masking in School Buildings	✓	WCHD	Required for all students, staff and visitors in school buildings
Physical Distancing/Lunch			3 feet in all classrooms and lunchrooms to the greatest extent possible. Outdoor lunch whenever weather permits.
Desk & Face Shields			Available upon request.
Cleaning & Ventilation	✓	MiOSHA	GPPSS complies with MiOSHA standards; requires air purifiers in regularly assigned classrooms.
Daily Health Screening			Recommended each day before school.
Masks on Buses	✓	FEDERAL/CDC	Masks are required at the federal level on public transportation.
Contract Tracing/Reporting	✓	WCHD	Required to report COVID-19 cases to WCHD. Exposure letters will be sent home.
COVID-19 Testing			No testing required for school or athletics.
COVID-19 Vaccination			GPPSS recommends for those eligible; not on MDHHS required vaccination list.

AGENCY ACRONYMS:

- CDC** - Centers for Disease Control and Prevention
- MDHHS** - Michigan Department of Health and Human Services
- MiOSHA** - Michigan Occupational Safety and Health Admin.
- MHSAA** - Michigan High School Athletic Association
- WCHD** - Wayne County Health Department

HELPFUL LINKS:

- [CDC COVID-19 Data Tracker](#)
- [MDHHS COVID-19 Resources](#)
- [MHSAA Health & Safety Information](#)
- [MiOSHA Homepage](#)
- [WCHD COVID-19 Resources](#)